



ARPRAN
INDUSTRIES

*Manufacturer and Supplier of
Premium Quality Diamond Tool*



Commitment to excellence in cutting tools

Why ... Arparn Industries?



We are committed to build relationships based on trust in the Stone Processing & Construction Industry. We produce Multi-Wire Saw, Quarry Wire Saw and Stationary Wire, Gangsaw Segments, Trimming Blades, Large Circular Saw for Granite, Marble, Limestone & Sandstone and Multi Blade for Granite. We also produce blades for Reinforced Concrete, Asphalt, Ceramic, Porcelain & Vitrified. We have earned the trust of our clients through our dedication to provide value based products globally. Our efficient and technically trained staff deliver a fine quality of cutting material. We understand that there should be mutuality of interests between both the parties and based on these ethics we understand our clients more than any one else. This makes us one of the leading companies in the diamond tools business. The effective, efficient, reliable and low cost nature of our business, principles and practices provides opportunities for mutual benefits.

The Diamond Wire Saw Beads and other diamond tools, which we offer are manufactured using special bond matrix with premium quality diamonds making them suitable in all kinds of applications. The latest technology used in these Diamond Wire Saw Beads makes them highly efficient. We are able to Saw from the hardest Granite to the softest Marble with high efficiency and provide cost effectiveness to our customer.

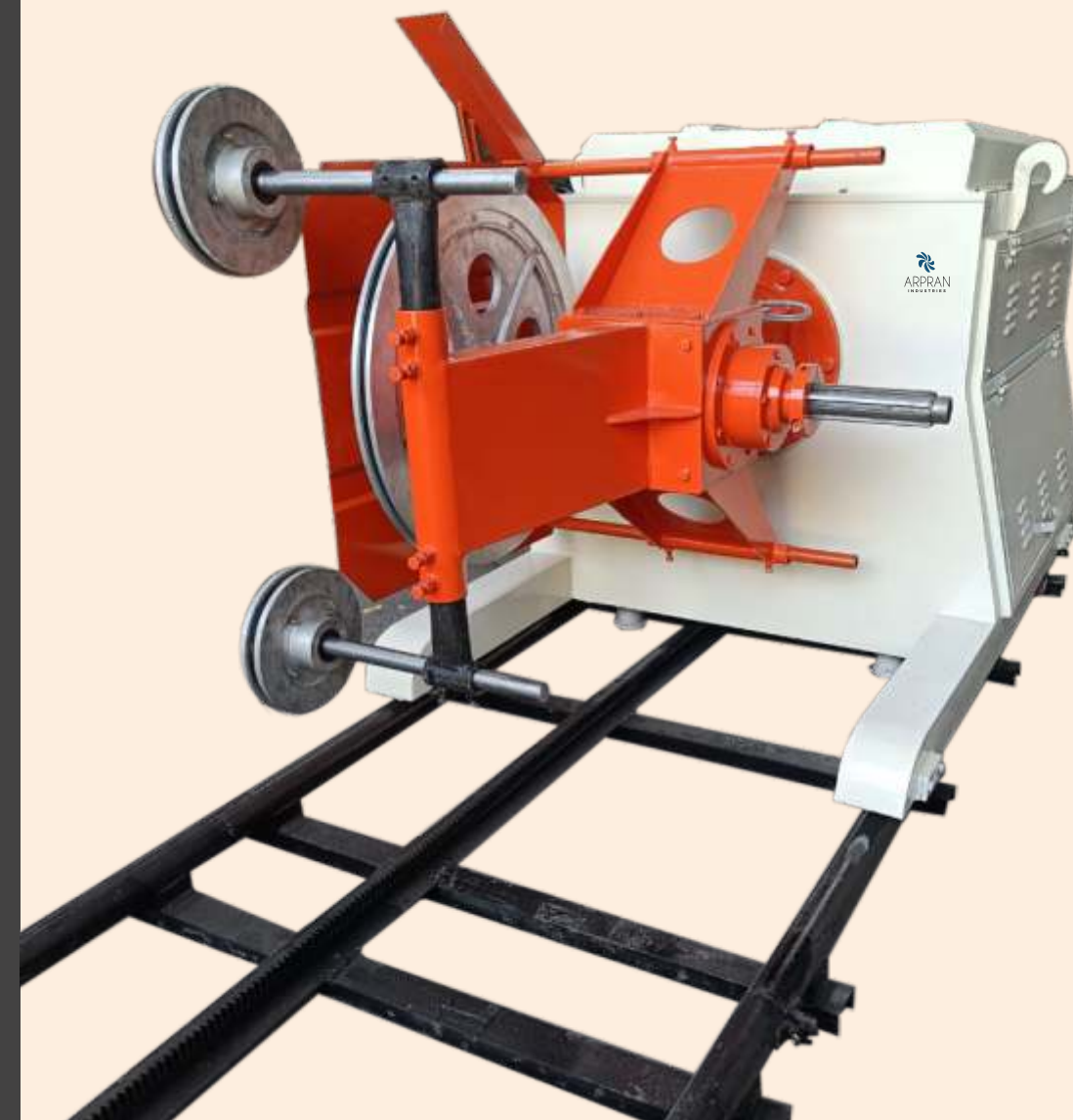
Quarry Wire Saw Machines

Technical Specification - 60HP Machine

Main flywheel	790 mm Diameter
Rotation main flywheel	320° angle
Diamond wire speed: Variable from	0-26m/s
main A.C. Electric Motor 1440RPM	45KW / 60 Hp [Make: Havells]
D.C. Electric Motor 1440RPM	1HP [Make: ELMO] Coupled with Gearbox
Control Panel Board	Powder Coated Body
Control Panel Cable	10 Metres
Railing Track	10 FT : 2 NOS
Connection B/w Panel & Machine	Plug Socket System Machine to Panel
Electrical Contractors Used	110 Amp - 110 Amp - 73 Amp
Transport Dimensions	(L) 2600mm,(W) 1300mm, (H) 1250mm
Total Weight	1900 kg(Approx)

We have developed the 75-60-40-20 HP Wire Saw Machines to suit the entire Natural Stone Industry with competitive price. Our machines have been designed with the latest State-of-art technology and heavy structure and stability which enables longer Diamond Wire life with high cutting Speed and lower power consumption.

The Wire Saw Machines have been designed to give high productivity with maximum yield and long life span. It can cut both Horizontal and Vertical and close to the ground levels to get an even bottom in the Quarry. Our Machines are with heavy body, so that there is no vibration while cutting and we ensure both Stability and Accuracy while cutting.





Multi Wire Saw

Multi Wire Saw for granite cutting is a technology developed for the enhancement of productivity in the granite gang saw industry, with saving on the cost of raw material sawn. It is 10-15 time more efficient than traditional gang saw cutting. This can also cut granite with different hardness. The Multi Wire Saw also enables better surface finish on the slab sawn & the biggest advantage is the low sawing cost. Further, there is an excellent cutting quality with accuracy and smooth cutting with low noise. There is also a good amount of saving on the power & water consumption.

We supply the Multi Wire with 36 beads/mtr from 6.3mm- 7.30mm diameter. The average speed on mixed granite is 20-26cm/hour. The efficiency is measured by down feed per minute. The life time of the Multi Wire can be measured between 6-10m²/mtrs depending on the class of granite. Our Multi Wire is produced using high strength wire with good flexibility and no vibration while cutting.



1

No Snapping while cutting

2

No wire marks while cutting and gives clean cut

3

Excelling depth of cut 20 to 26 cm/ hour

6.3mm and 7.3mm Multi-wire for Granite



Multi-wire for Granite			
Type of Material	Class	Speed	Life
Soft Granite	1-2	24-26cm/hour	8-10m ² -mtrs
Medium Granite	3-4	22-24cm/hour	7-8m ² -mtrs
Hard Granite	5	20-22cm/hour	6-7m ² -mtrs



Rubber Coated Quarry Wire

Quarry Wire Saw

Diamond Wire Saw is one of the most advanced tool widely used for quarrying and processing natural stones such as Granite, Marble, Limestone, Sandstone etc

Diamond Wire Saw for Granite Profiling

We offer our customer a range of wire for granite profiling with thickness of wire beads range between 8.5 to 9.0mm diameter.

Diamond Wire for Granite Quarries:

The Diamond Wire technology for quarry can widely improve the efficiency of Granite quarry and reduce the waste of quarry resources. These wire assist in quarrying large dimensions of block and prominently boost the rate of output in quarry.

Diamond Wire Saw for Granite Profiling				
Diameter mm	Fixing Type	Material Type	Sawing Speed (mm/min)	Life time (m2 / m)
Φ 8.5-9.0	Rubber / Plastic	Class 1-2	12-20	10-15
	Rubber / Plastic	Class 3-4	8-15	8-12
	Rubber / Plastic	Class 5	6-10	5-9



PU Coated Quarry Wire

Stationary Wire

Diamond Wire for Block Squaring (Stationary Wire)

Diameter mm	Fixing Type	Beads /M	Material Type	Sawing Speed (m2 / h)	Out Put (m2/m)	Remark
Φ 11.0 Φ 11.5	Plastic	37/40	Class 1-2	10-18	14-20	Sintered
	Plastic	37/40	Class 3-4	7-14	10-15	
	Plastic	37/40	Class 5	5-10	7-10	

Wire for Marble Quarries

Diameter mm	Fixing Type	Beads /M	Material Type	Sawing Speed (m2 / h)	Life time (m2 / m)	Remark
Φ 11.5	Spring Rubber / Plastic	28/30 32/40	White	10-20	30-55	Sintered
	Spring Rubber / Plastic	28/30 32/40	Travertine	8-16	15-35	
	Spring Rubber / Plastic	28/30 32/40	Compact	5-8	10-25	

Wire for Granite Quarries

Diameter mm	Fixing Type	Beads/M	Material Type	Sawing Speed (m2 / h)	Life time (m2 / m)
Φ 11.5	Rubber/ Plastic	40	Class 1	4-8	15-20
		40	Class 3-4	2-5	8-15
		40	Class 4-5	1-3	5-8



Wire for Block Squaring



Wire for Marble Quarries



Wire for Granite Quarries

Trimming Blades (Edge Cutting Blades)

TRIMMING BLADES Ø 350 - 600 MM

Diamond Circular Saw Blades are used for cutting and grinding all natural stones such as Granite, Marble, Sand Stone, Lime Stone, Slate, Concrete, Basalt and Mica etc. We are Manufacturing Economical and Premium quality blade which ensures high quality and outstanding performance. We can supply



these blades in horizontal and vertical cutting.

We design these blades keeping in mind the needs of the customer, so as to ensure the following:

- Easy and smooth cutting
- Good cutting results and high efficiency
- Long life span and stable performance
- Fine finish without chipping

We can provide Hot Pressed Sintered Diamond Saw Blades, Braze Welded Diamond Saw Blades, Diamond Saw Blades with Silent Steel Core etc.

We also supply loose segments for these blades for re-tipping.

Standard Dimensions			
Diameter		Segment Thick. (mm)	Segment Height (mm)
(mm)	(inch)		
350	14"	3.2	10-15
400	16"	3.5	10-15
450	18"	4	10-15
500	20"	4.0	10-15
600	24"	5	10-15

Gang Saw Segments

Gang Saw Segments are one of the most advanced tools to cut large size blocks which cannot be sawn on block cutters due to limitation of depth of cutting. We provide Gang Saw Segments for 2.0 - 3.5 mm thickness blades. Our Segments are designed so as to give even cut in the thickness in slabs with no variations and chatter marks.

We specialize in cutting from most dense marble to the softest marble. We usually provide a height of 10mm with no base. We provide segments either in taper or in box as per your requirements. Our Gang Saw Segments are very famous in India, Brazil, Egypt, Turkey, Jordan, Middle East, Gulf Countries and Europe.



Trimming Blades Ø 700 - 850 mm

Diamond Circular Saw Blades are used for cutting and grinding all natural stones such as Granite, Marble, Sandstone, Concrete, Limestone, Slate etc. As these are Large Diameter Blades, we give special emphasis on the bonding and we supply sandwich as well as box segments. We give complete blades as well as loose segments for this category. These blades are famous for low power consumption and give perfect finish to the tiles from the block.

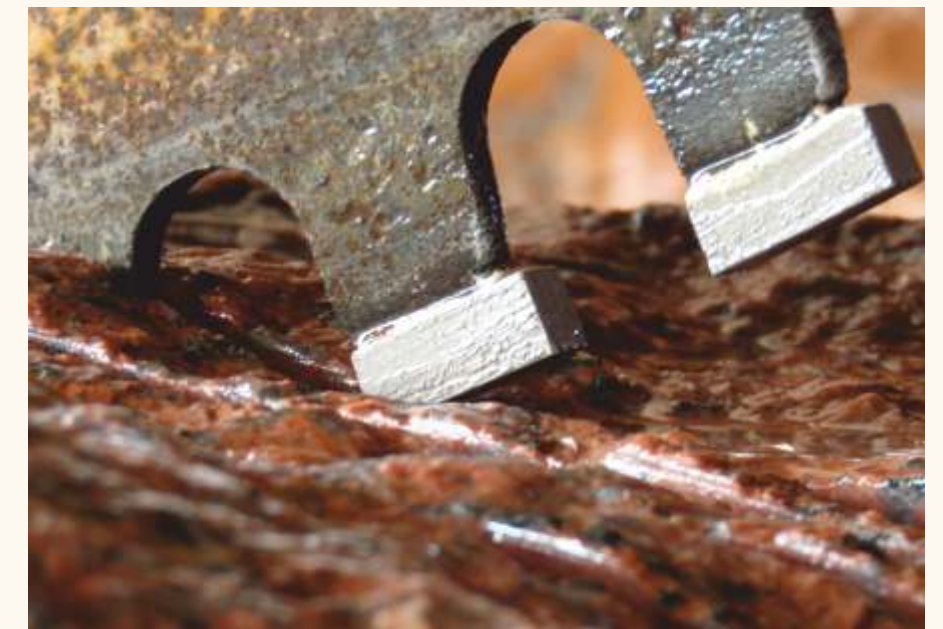
Standard Dimensions				
Saw Diameter	No. of Slots (narrow slot)	No. of Slots (wide slot)	Core Thick. (mm)	Height of Diamond Impregnation (mm)
700	50	40	4.0	8-15
800	58	46	4.5	8-15
850	58	46	4.5	8-15



Mono Dressing Segments

We also provide Mono Dressing Segments for Marble block squaring/dressing. These are usually provided in box size, however we can also give them in taper size.





Diamond tools for **Large Circular Saw**

Saw Blades Ø 1000 - 4200 mm

Large Circular Saw Blades are usually re-tipped thus we mostly provide loose segments for these blades. However we can also provide the complete saw with segments, if required. Our segment of these dimensions are very popular. We usually provide sandwich segments and multi layer segments, so as to enable free cutting. Our segments can be used for water cutting & any other lubricants. However we request customers to inform us in advance the cutting medium, so as to design the tool accordingly. Our segments cut the hardest of the stone, without any load on the machines and the blade. Thus we guarantee free cutting segments with long life.



We have also designed low cost segments in this category and we guarantee free cutting and adequate life for these segments also. Our segments can be manufactured with height ranging from 10 mm upto 30 mm. We proudly state that our segments can absorb any condition of the machine due to its inherent design of smooth cutting and latest state of art technology. We also provide segments of blades of various sizes used on single machine. As we have an advance R&D and experienced tool designers with special knowledge of metal bonding, our technology gets upgraded from time to time.

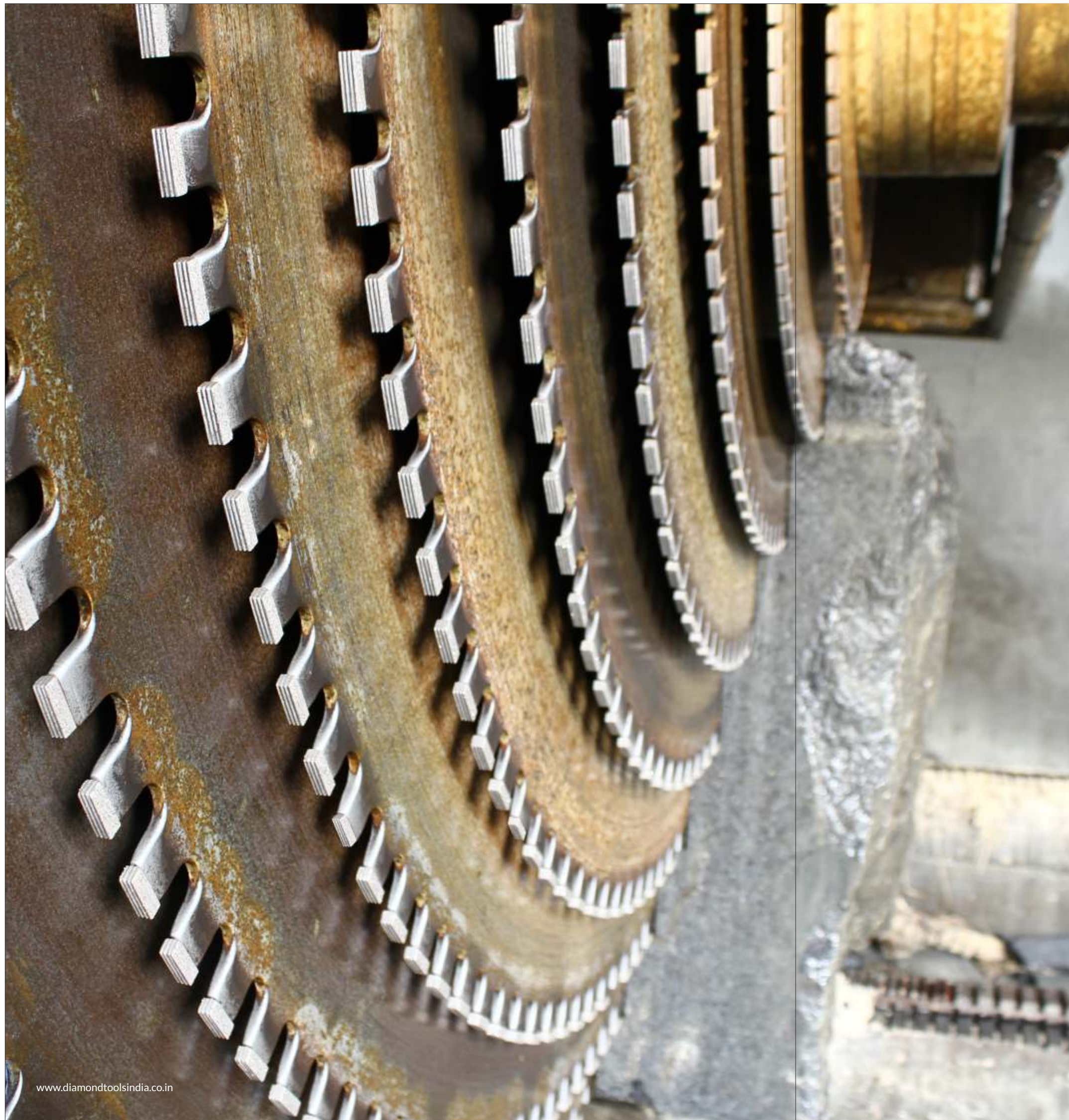
Our segments and blades are used for cutting all natural stones such as granite, marble, sand stone, lime stone, slate, basalt and mica etc. As these are large diameter blades, we give special emphasis on the bonding and we supply sandwich as well as box segments. We give complete blades as well as loose segments for this category. These blades are famous for low power consumption and give perfect finish to the slabs and tiles from the block.



Grinding and Polishing Segments



Standard Dimensions						
Saw Diameter	No. of Slots (narrow slot)	No. of Slots (wide slot)	Core Thick. (mm)	Segment Length (mm)	Cutting Width (mm)	Height of Diamond Impregnation (mm)
1000	-	70	5.0	23/24	7.0	10-20
1100	-	74	5.5	23/24	7.0/7.5	10-20
1200	-	80	5.5	23/24	7.5/8.0	10-20
1250	-	84	5.5	23/24	7.5/8.0	10-20
1300	-	88	6.0	23/24	7.5/8.0	10-20
1350	-	88	6.0	23/24	7.5/8.0	10-20
1600	-	104	6.5/7.0	23/24	9.0/9.5	10-20
1800	-	120	7.0	23/24	9.5/10.0	10-30
2000	-	128	7.5/8.0	23/24	10.0/10.5	10-30
2200	-	132	8.0	23/24	10.5	10-30
2500	-	140	9.0	23/24	11.0/12.0	10-30
3000	-	160	9.0	23/24	12.0/12.5	10-30
3500	-	180	9.0	23/24	12.0/12.5	10-30



MULTI BLADE

We supply Multi Blade Segments for Multi Blades on diameter 900mm, 1000mm, 1200mm, 1300mm and 1600mm and other sizes as per customer requirement. Our segments are manufactured with utmost precision, so as to avoid any taper or deviation in the final cut of the block. We provide free cutting and long life segments for the Multi Blades.



We can also provide tailor made sizes as per the customer demand.

Multi Blade Saws with Diamond Segments (Same size of blades)		
Diameter (MM)	Segments Size (MM)	Blade (Pcs.)
900	24x6.6/6.0x12	64
1000	24x7.0/6.4x12	70
1200	24x7.5/6.5x12	80
1300	24x7.5/8.5x13	88
1600	24x9.5/8.5x13	108

Multi Blade Segments (Different size of blades)			
Combination of Blade (mm)	Nos of Blades	Steel Core (mm)	Segment Dimension (mm)
Φ600mm - Φ2200mm	5-10	5.5	24x6.4/7.4x15
Φ450mm - Φ2450mm	5-21	6.5	24x7.4/8.4x15
Φ450mm - Φ3000mm	7-10	7.2	24x8.4/9.4x15

Diamond Tools For Construction Industries- **CONCRETE & ASPHALT**

Standard Dimensions

Diameter		Segment Thick. (mm)	Segment Height (mm)
(mm)	(inch)		
300	12"	3.0	10/12
350	14"	3.2	10/12
400	16"	3.6	10/12
450	18"	3.8	10/12
500	20"	4.0	10/12
600	24"	4.5	10/12
650	28"	4.5	10/12
700	30"	4.5	10/12
750	32"	4.5	10/12
800	36"	4.5	10/12
900	38"	4.5-6.0	10/12
1000	40"	5.5-6.5	10/12
1100	44"	5.5-6.5	10/12
1200	48"	5.5-7.0	10/12

Circular Blades for Reinforced Concrete and Asphalt

We are supplying diamond cutting tools for Green and Reinforced Concrete from dia 300mm to dia 1200mm. These diamond blades are manufactured with wear resistant bonds and in certain cases they are supported by hard metal under cutting protection. These are used on walk behind and flat saws machines. We can provide these blades with different arbor sizes and segmented specification as desired.

These blades are also manufactured with a high wear resistant bond as the reinforced concrete is very abrasive and thus needs a tough bond. These are also used on walk behind saw and flat saw machines. As the process involves lot of heat generation while cutting thus, we can also supply laser welded saw blade in order to protect the breakage of segments. We also use high purity of silver in normal brazed blades.

Our range of products



Wire Saw For **CONCRETE CUTTING**

Diamond Wire Saw for Concrete Cutting is the most effective and efficient way for sawing large concrete construction and thick concrete walls, especially when extremely thick or awkward sizes need to be cut. Concrete Wire Saw assist in sawing deep depth in heavy reinforced concrete. These Wire are made up of rubber and these almost cut any structure of large concrete where other methods are not feasible. The Wire Saw is also used for cutting and removing reinforced concrete such as big sections, columns or beams. The diamond wire requires free flowing water as coolant, so that there is free cutting and minimization of over heating while in operation.



Vacuum Brazed Wire for
Reinforced Concrete

Diamond Frickert

Diamond Frickert is used in automatic polishing machine for polishing the surface of granite slabs & tiles. With the help of the frickert there is a drastic reduction in the consumption of traditional abrasives. Diamond Metal Frickert has the advantage of longer life span and higher efficiency.



The size of the frickert is 140 mm and the grit size is : 36#, 46#, 60#, 80#, 100#, 120#, 140#, 180#, 240# & 320#.

General Purpose (DIY)

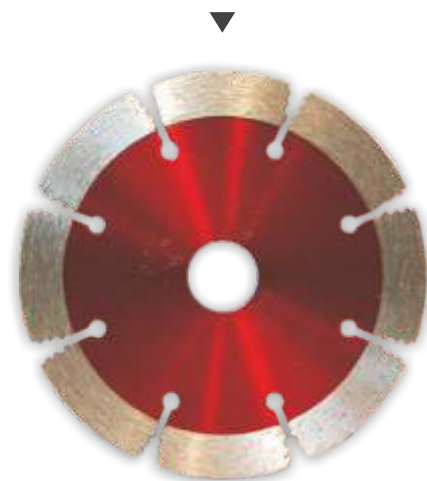
Small Diamond Blades

We are supplying Small Diamond Blades, cold pressed for fast cutting, hard and abrasive material. These blades range from dia 105mm to dia 230mm. These blades are manufactured in segmented, turbo and continuous rim. These can be supplied either for dry cutting or wet cutting and are available under normal bond and long life bond.

Turbo Small Diamond Blade
For Hard And Abrasive Material



Segmented Small Diamond Blade
For Hard And Abrasive Material



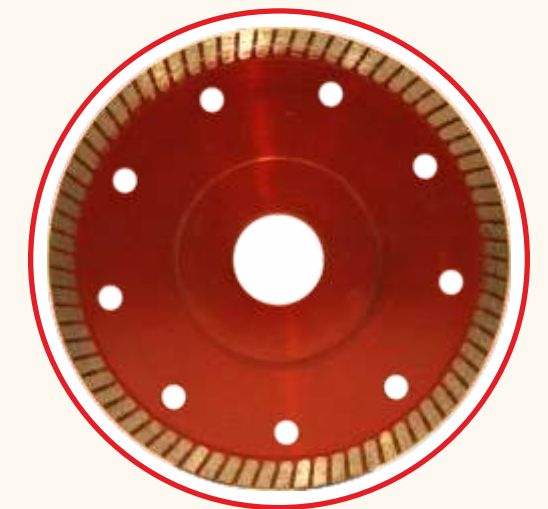
Ceramic, Porcelain & Vitrified Blades

We are supplying diamond rollers for calibrating and leveling of Ceramic, Vitrified and Porcelain tiles so as to get correct thickness and flatness on the surface. We also supply roller segments for Ceramic and Porcelain tiles for grinding and calibrating the surface.

We also supply Diamond Grinding Cup Wheel for Ceramic, Porcelain and Vitrified Tiles. Diamond cup wheels are used for buffing and shaping Ceramic, Porcelain and Vitrified tiles. These are fitted on manual cutting machine and manual grinding machines and are available from diameter 100 mm to 200 mm.

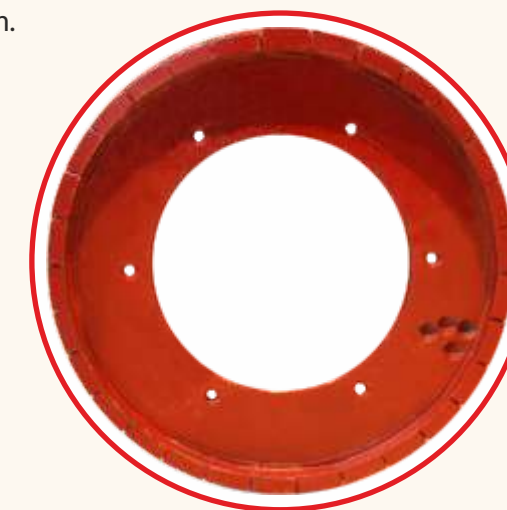
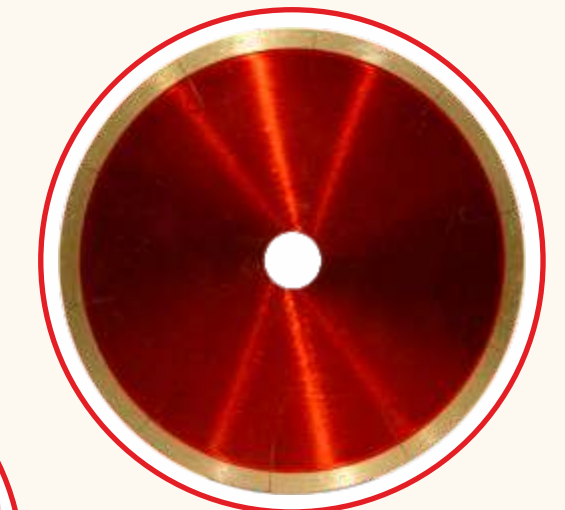
Diamond Cutting Blade for Ceramic, Porcelain and Vitrified Tiles

These blades are supplied in continuous rim from diameter 105 mm to 125 mm for Ceramic, Porcelain and Vitrified tiles. These blades are manufactured for fast cutting of the end product. Special care is required while designing the tool in order to avoid any chipping on the surface. These are fitted on tile saw, bevel tile saw, angle grinder and circular saw. The rim of this blade is of 1.5 mm thickness and 8 mm height. These are supplied for dry cutting.



We also supply continuous blade for wet cutting from diameter 105 mm to 300 mm.

We are also supplying music slot tile blade for wet cutting application. These blades are ultra thin and due to the music slots, it enables less stress on the blade while cutting and are also less noisy. These are used for wet applications and are manufactured from diameter from 180 mm to 350 mm.



Polishing Pads

Diamond polishing pads are specially used for processing Concrete, Engineered and Natural stones in various shapes. It is installed on portable grinding machines. There are available both in Wet and Dry.

Wet Polishing Pad

Diameter		Segment Thick. (mm)	Connector	Grits/Grain
(mm)	(inch)			
80	3"	3.0	M14 & 5/8"-11	50#,100#,200#,
100	4"	3.0		400#,800#,1500#,
125	5"	3.0		3000#, Buff

Different arbor sizes and segment specifications are available upon request

Dry Polishing Pad

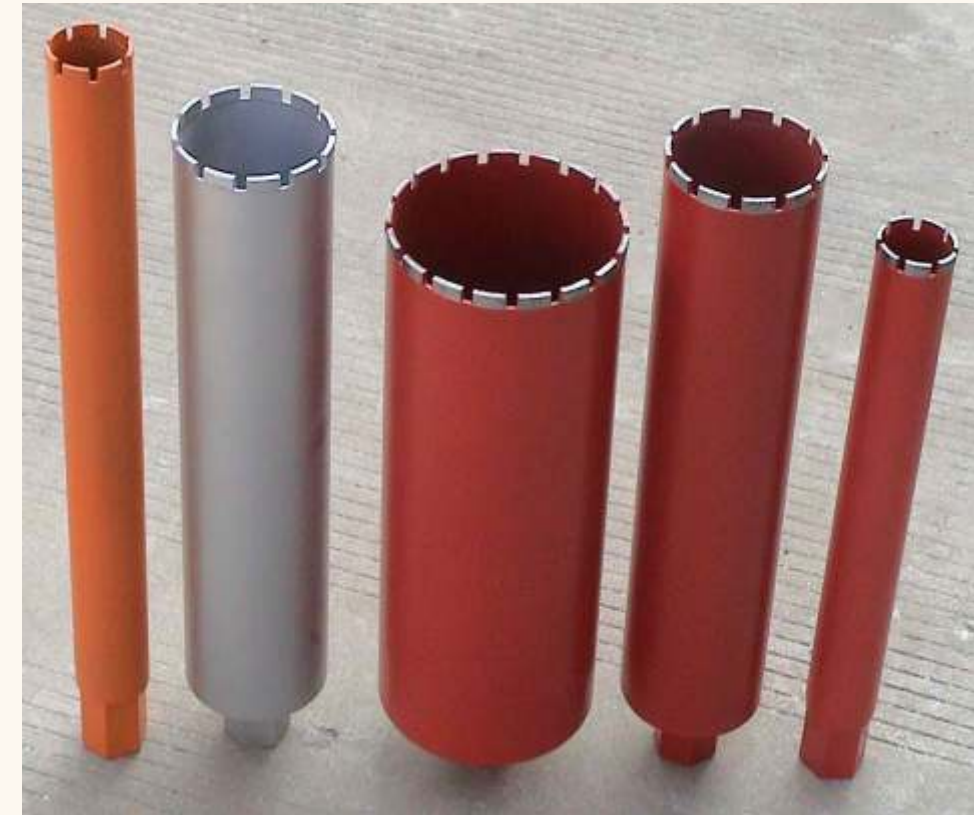
Diameter		Segment Thick. (mm)	Connector	Grits/Grain
(mm)	(inch)			
80	3"	1.1	M14 & 5/8"-11	50#,100#,200#,
100	4"	1.1		400#,800#,1500#,
125	5"	1.1		3000#, Buff

Different arbor sizes and segment specifications are available upon request



Core Drills

Core drilling techniques are used when precise, circular cuts are needed. We are providing either complete core drill or segments to be brazed to the core drills at the customer end. Holes of almost any diameter can easily be drilled to make openings for plumbing, electrical or any other job.



We offer core drills from 6.5 mm till 350 mm diameter. The Shank length can be tailor made but for the smaller core drills is 50 mm and for longer drills is 450 mm. Our Core drills are used on angle grinders or hand /fixed drill machines. We ensure fast cutting with low cost of drilling.





Office

143, Paschim Vihar, Vaishali Nagar, Jaipur-302021 Rajasthan, India.

Factory

Plot No. 4, New Industrial Area, Dudu-303008 Jaipur, Rajasthan, India.

Phone:

+91 9414068933, 9414068932

Email:


arparanindustires@gmail.com
arparansales@gmail.com
marketing@diamondtoolsindia.co.in

Website:

www.diamondtoolsindia.co.in

 Arpran Diamond Tools

 arprandiamondtools

 Arpran Industries (Diamond Tools Division)